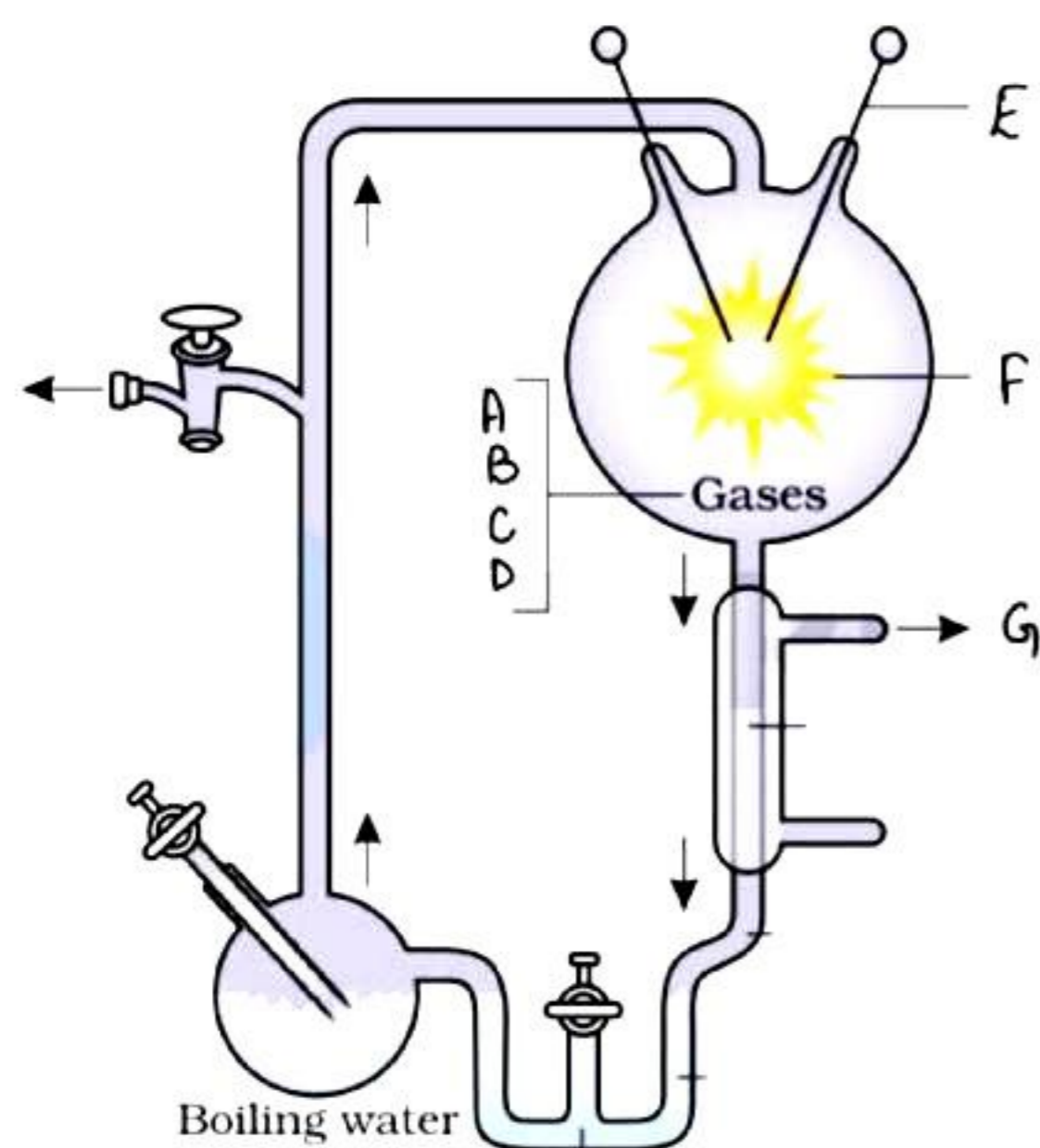


Evolution

Set – 1

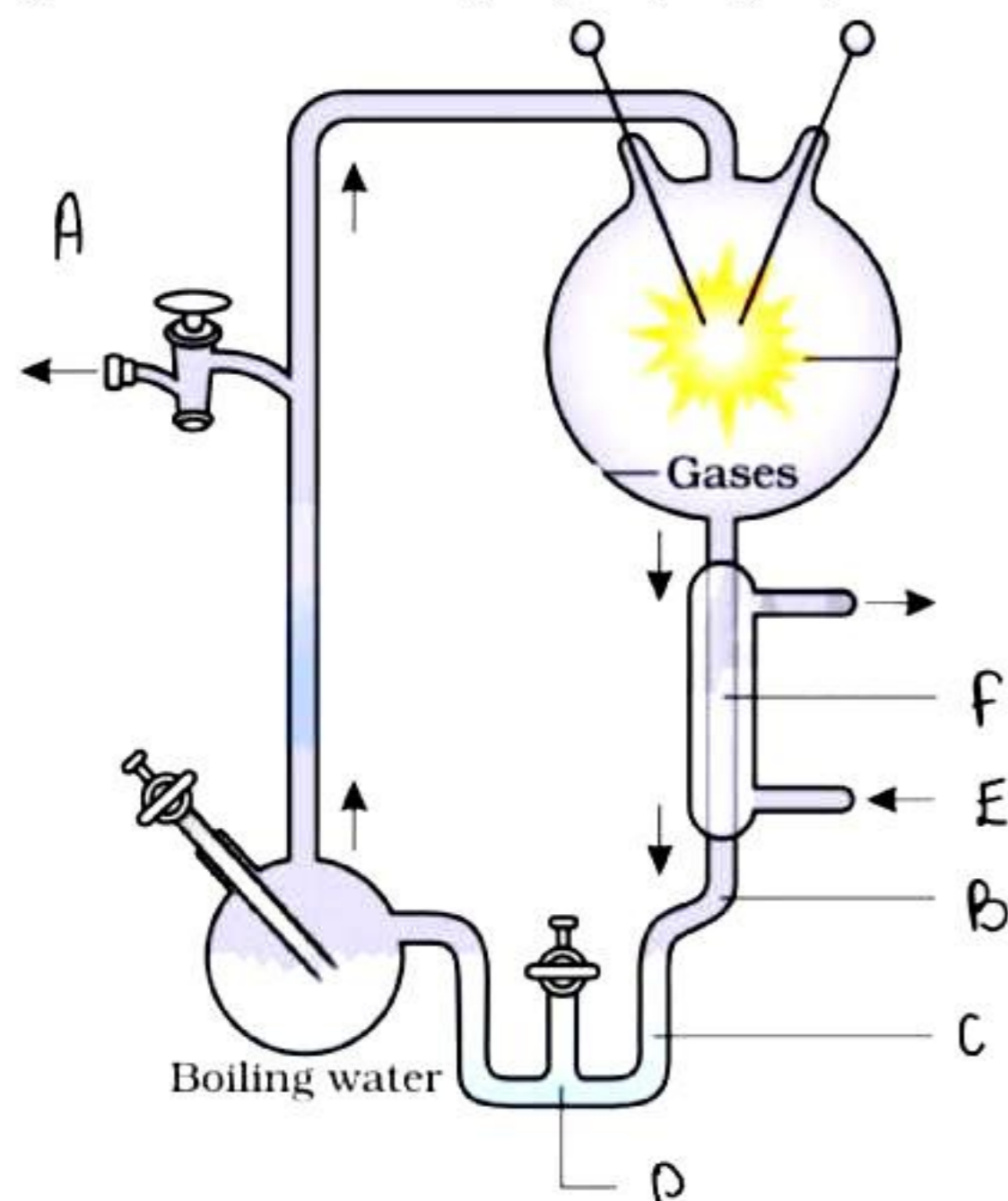
Q1. What is A, B, C, D, E, F, G in the following image?



- A. CH_3 , NH_3 , H_2O , H_2 , water out, electrodes, spark discharge
- B. water out, spark discharge, electrodes, CH_3 , NH_3 , H_2O , H_2
- C. CH_3 , NH_3 , H_2O , H_2 , Electrodes, Spark discharge, Water out
- D. CH_3 , NH_3 , H_2O , H_2 , water out, spark discharge, electrodes

Ans. (C)

Q2. What is A, B, C, D, E, F in the following image?

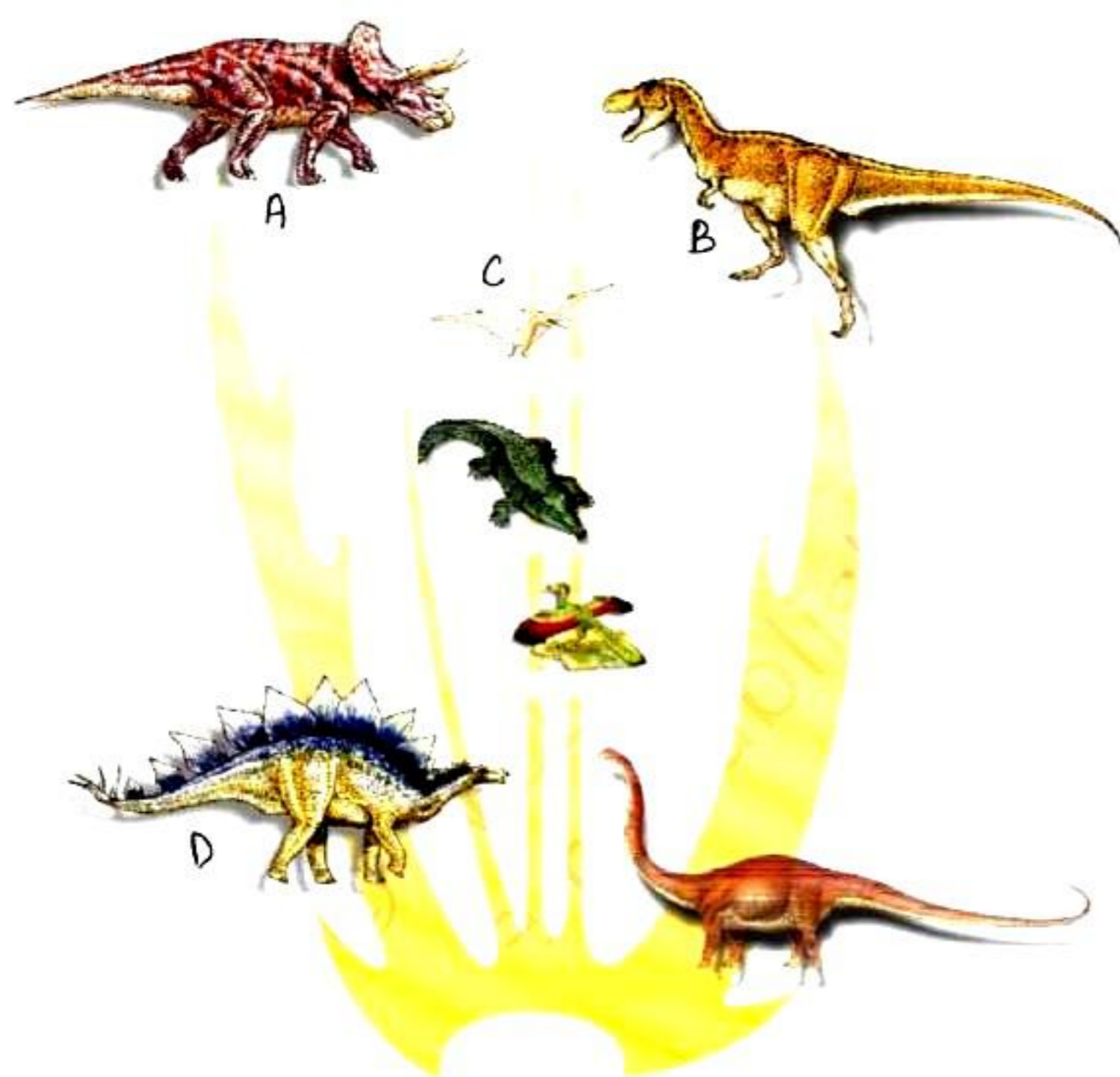


- A. to vacuum pump, water droplets, water containing organic compounds, liquid water in trap, water-in, water-out
- B. to vacuum pump, water-in, water-out, water droplets, water containing organic compounds, liquid water in trap
- C. water-in, water-out, to vacuum pump, water droplets, water containing organic compounds, liquid water in trap
- D. water-out, water-in, liquid water in trap, water containing organic compounds, water droplets, to vacuum pump

Ans. (A)

Set - 2

Q1. Write the correct names of the dinosaurs in the given figure in A,B, C and D.

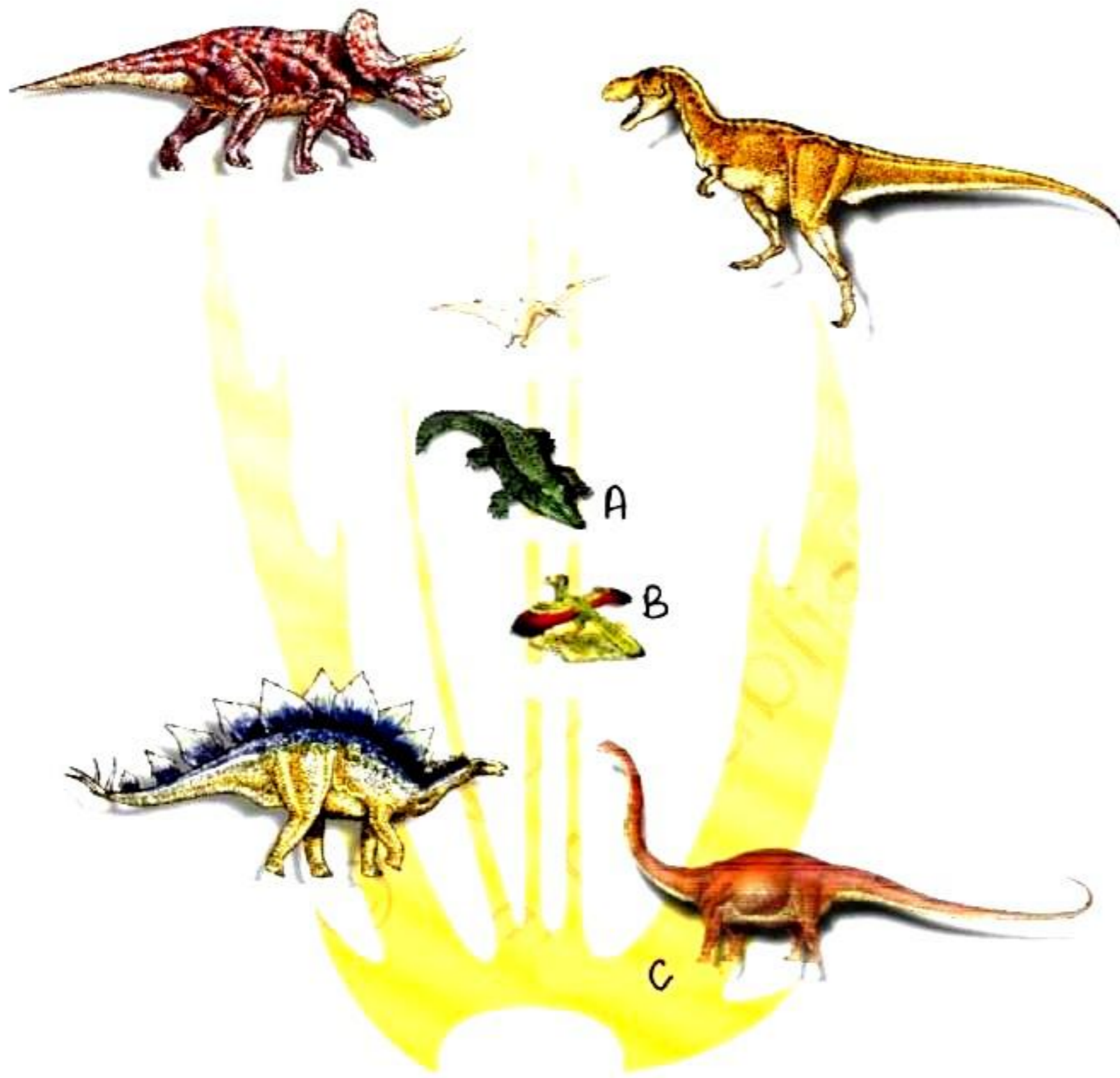


- A. Triceratops, Tyrannosaurus, Pteranodon, Crocodilian
- B. Triceratops, Tyrannosaurus, Pteranodon, Stegosaurus
- C. Crocodilian, Archaeopteryx, Stegosaurus, Brachiosaurus
- D. Tyrannosaurus, Pteranodon, Stegosaurus, Brachiosaurus

Ans. (B)



Q2. Write the correct names of the dinosaurs in the given figure in A,B and C.

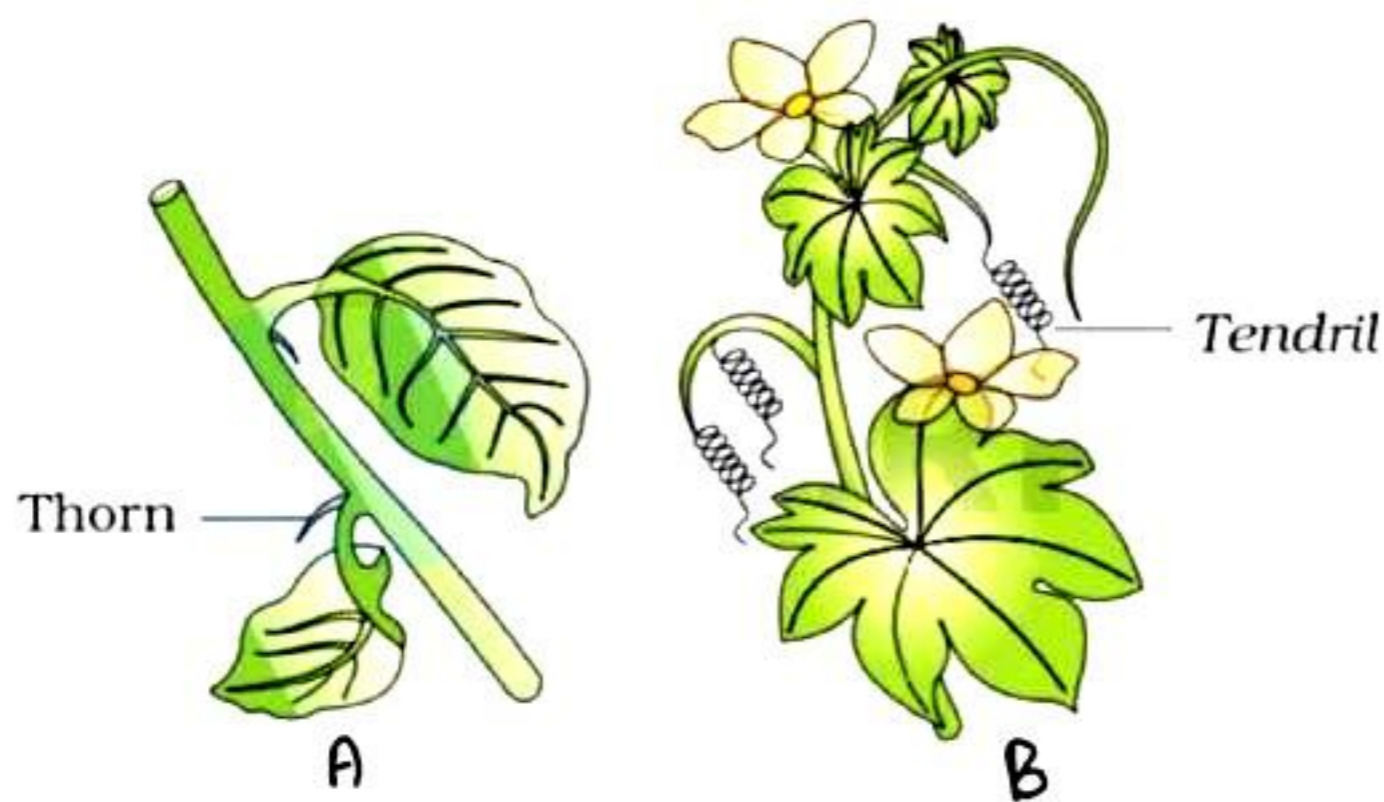


- A. Triceratops, Tyrannosaurus, Pteranodon
- B. Triceratops, Tyrannosaurus, Pteranodon
- C. Crocodilian, Archaeopteryx, Brachiosaurus
- D. Tyrannosaurus, Pteranodon, Stegosaurus

Ans. (C)

Set – 3

Q1. Write the name of plants A and B.

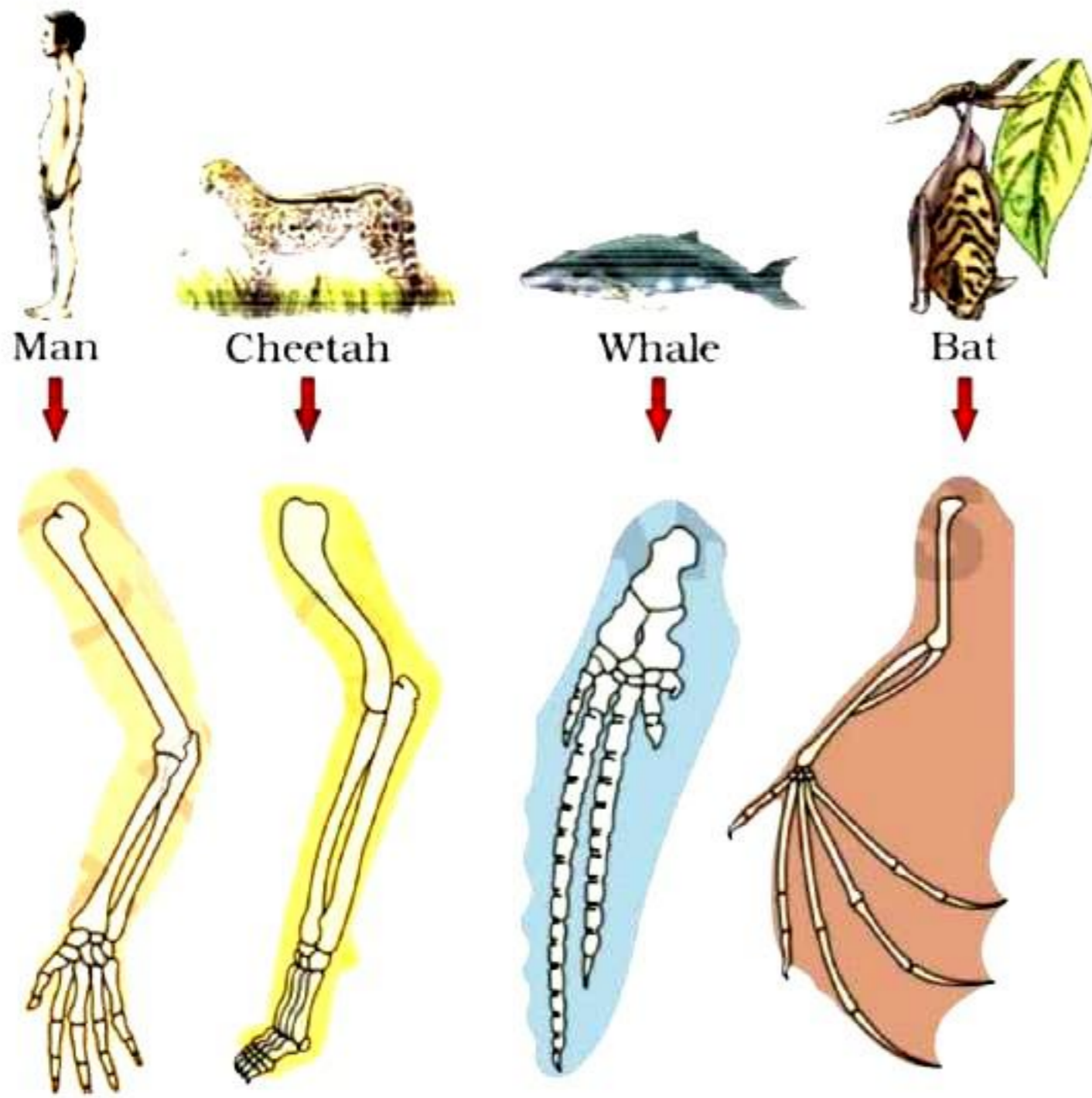


- A. Bougainville, Cucurbita
- B. Bougainville, Brinjal

- C. Cucurbita, Bougainville
- D. Brinjal, Cucurbita

Ans. (A)

Q2. What does the given figure represent?



- A. examples of homologous organs in plants
- B. examples of Homologous organs in animals
- C. examples of heterologous organs in plants
- D. examples of heterogeneous organs in animals

Ans. (B)

Set – 4

Q1. What does the A and B represent in the given figure about the white winged moth and dark winged moth?



(a)



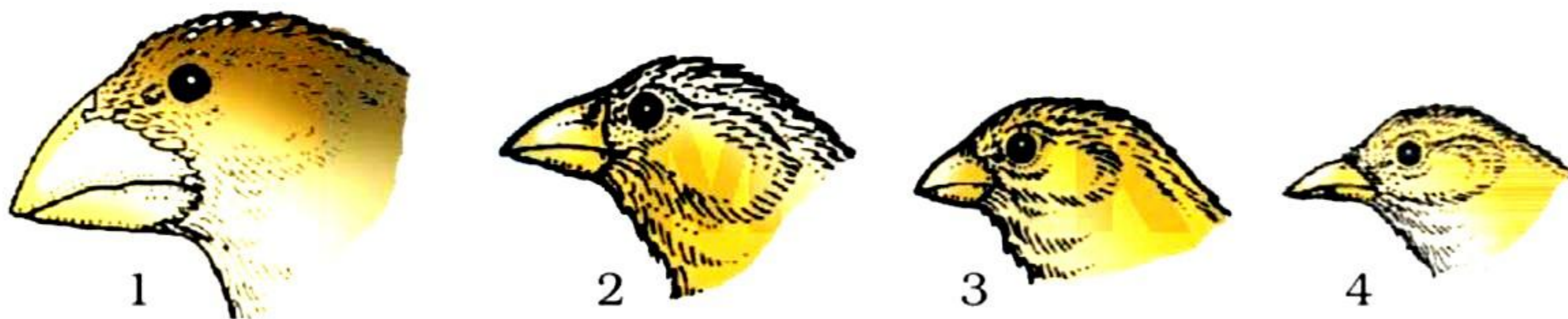
(b)

- A. a- in unpolluted area , b- in polluted area
- B. a- in polluted area, b- in unpolluted area
- C. a- in city area, b- in village area
- D. a- in village area, b- in city area

Ans. (A)

Set – 5

Q1. What does the given figure show ?

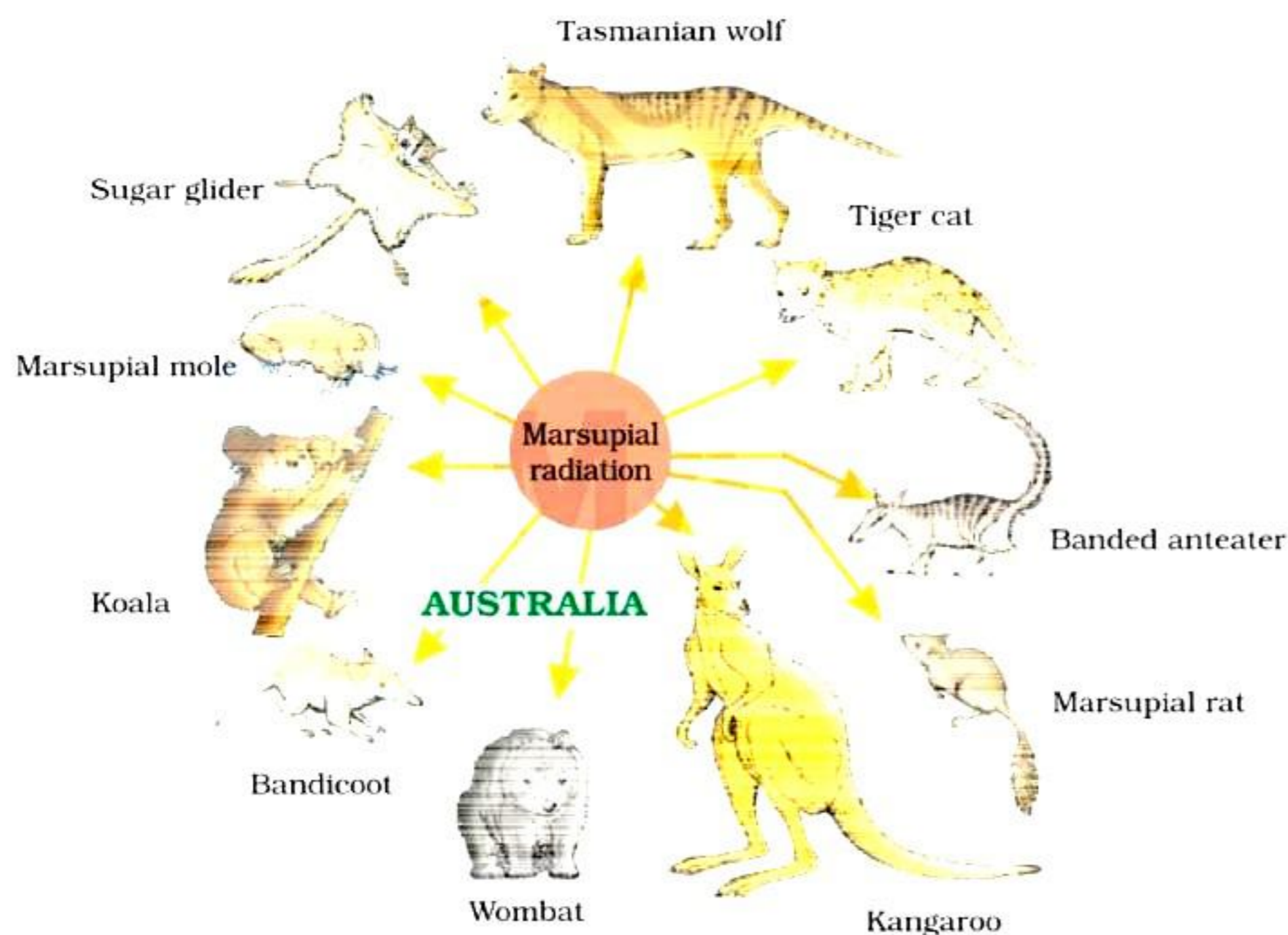


- A. Evolution
- B. Adaptive radiation
- C. biological Evolution
- D. Natural selection

Ans. (B)

Set – 6

Q1. What does the given figure represent?

















- A. adaptive radiation in beaks of finches
- B. natural selection of marsupials of Australia
- C. natural selection in beaks of finches
- D. Adaptive radiation of marsupials of Australia

Ans. (D)

Set – 7

Q1. What does A and B represent in the given figure?

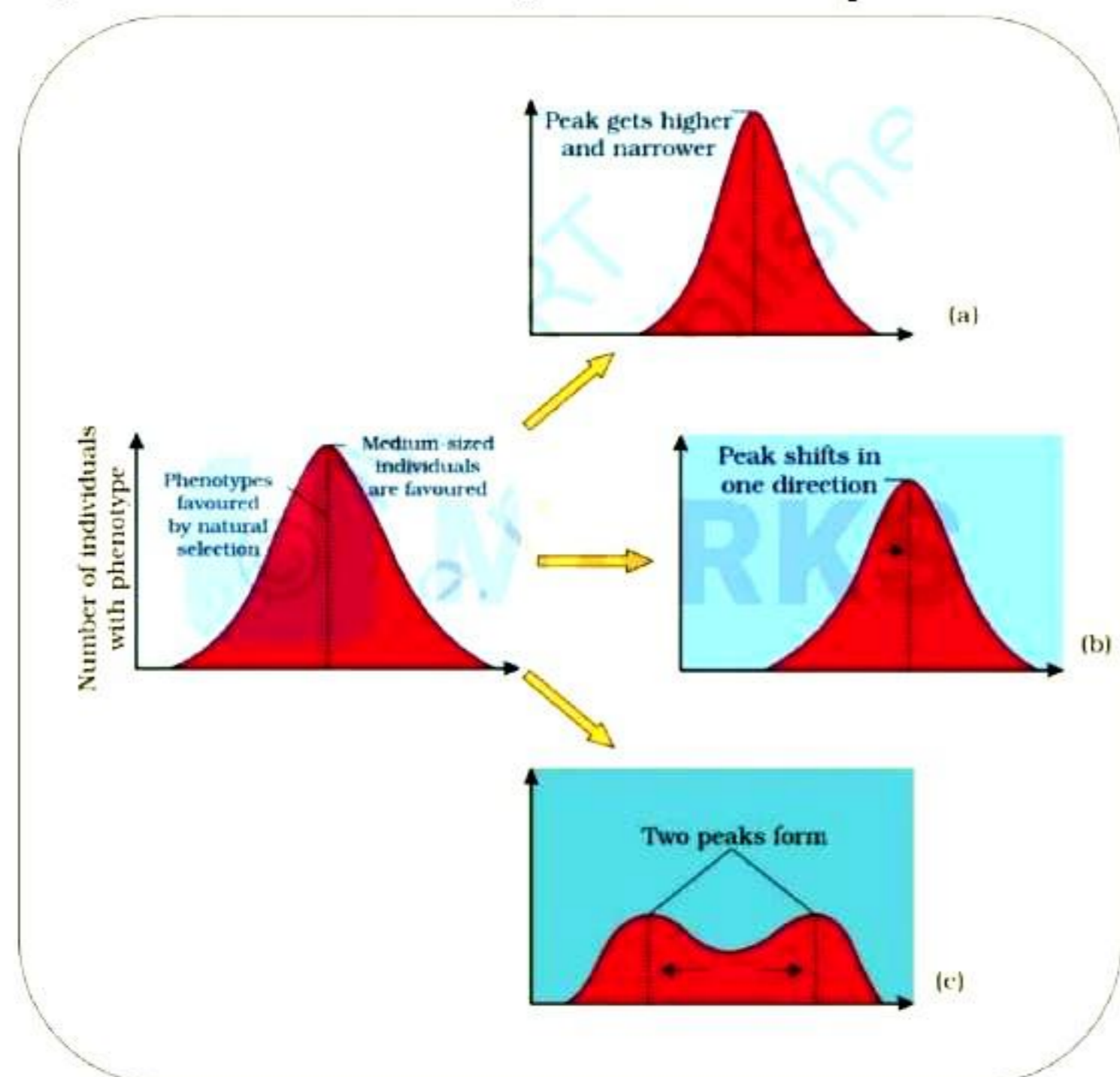
A	B
 Mole	 Marsupial mole
 Anteater	 Numbat (anteater)
 Mouse	 Marsupial mouse
 Lemur	 Spotted cuscus
 Flying squirrel	 Flying phalanger
 Bobcat	 Tasmanian tiger cat
 Wolf	 Tasmanian wolf

- A. placental mammals, Australian marsupials
- B. Australian marsupials, placental mammals
- C. placental mammals, mammals
- D. wild animals, domestic animals

Ans. (A)

Set – 8

Q1. What does A,B and C represents in the following figure?

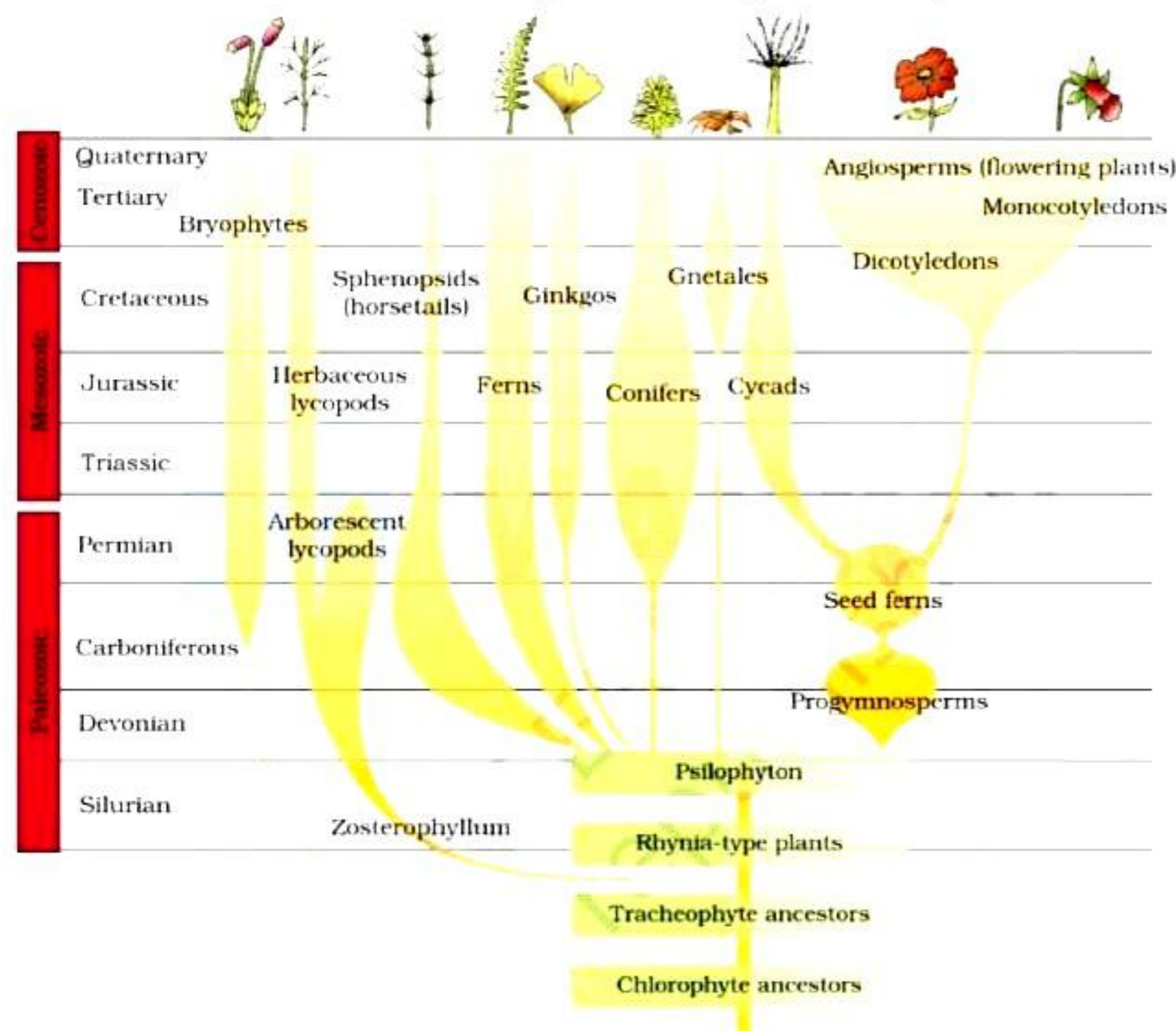


- A. Stabilising, Directional, Disruptive
- B. Directional, Disruptive, Stabilising
- C. Directional, Stabilising, Disruptive
- D. None of the above

Ans. (A)

Set – 9

Q1. What does the given figure represent?

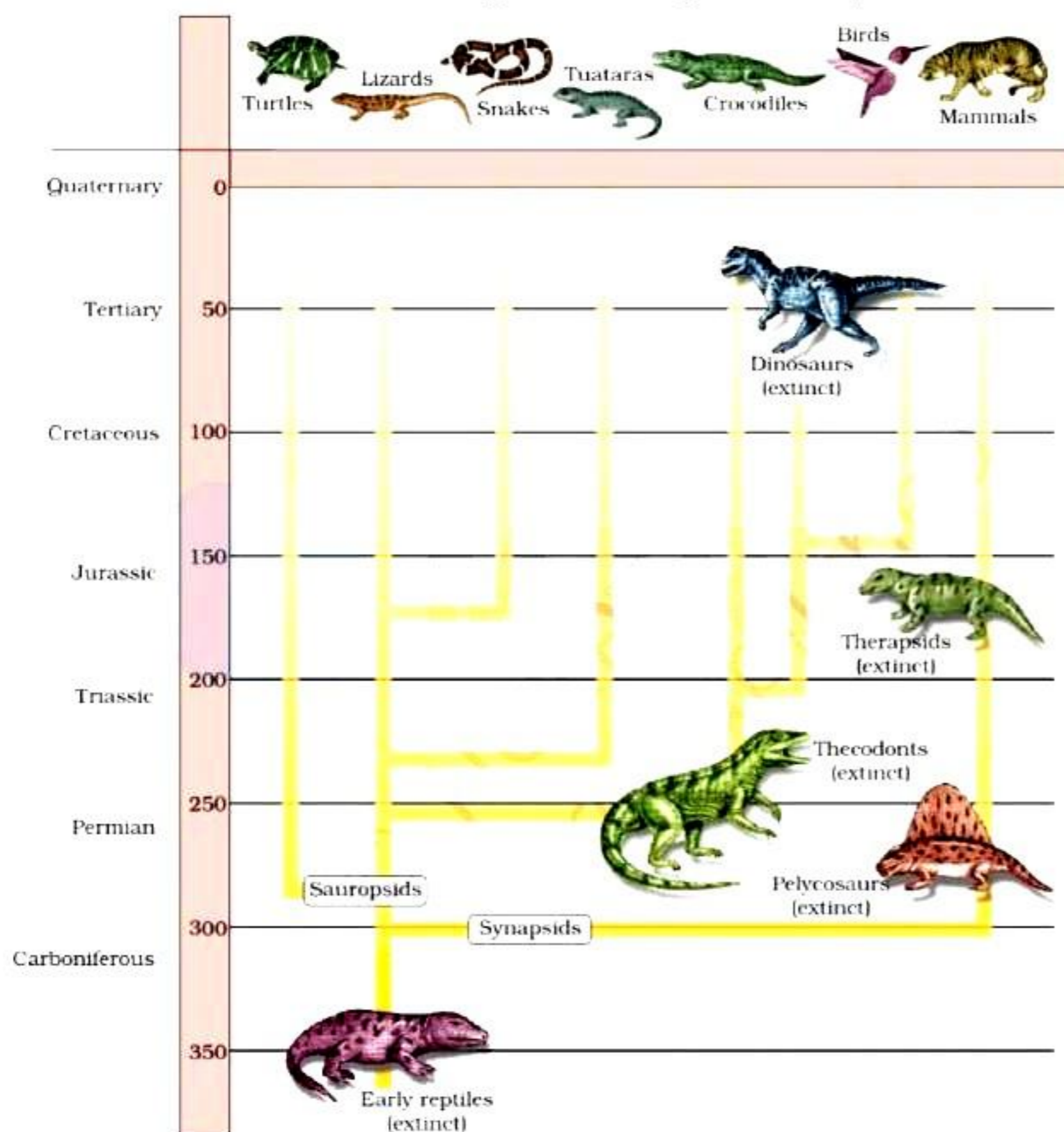


- A. evolution of plant forms through geological periods
- B. evolution of Bryophytes
- C. evolution of animals through geological periods
- D. evolution of Pteridophytes

Ans. (A)

Set – 10

Q1. What does the given figure represent?

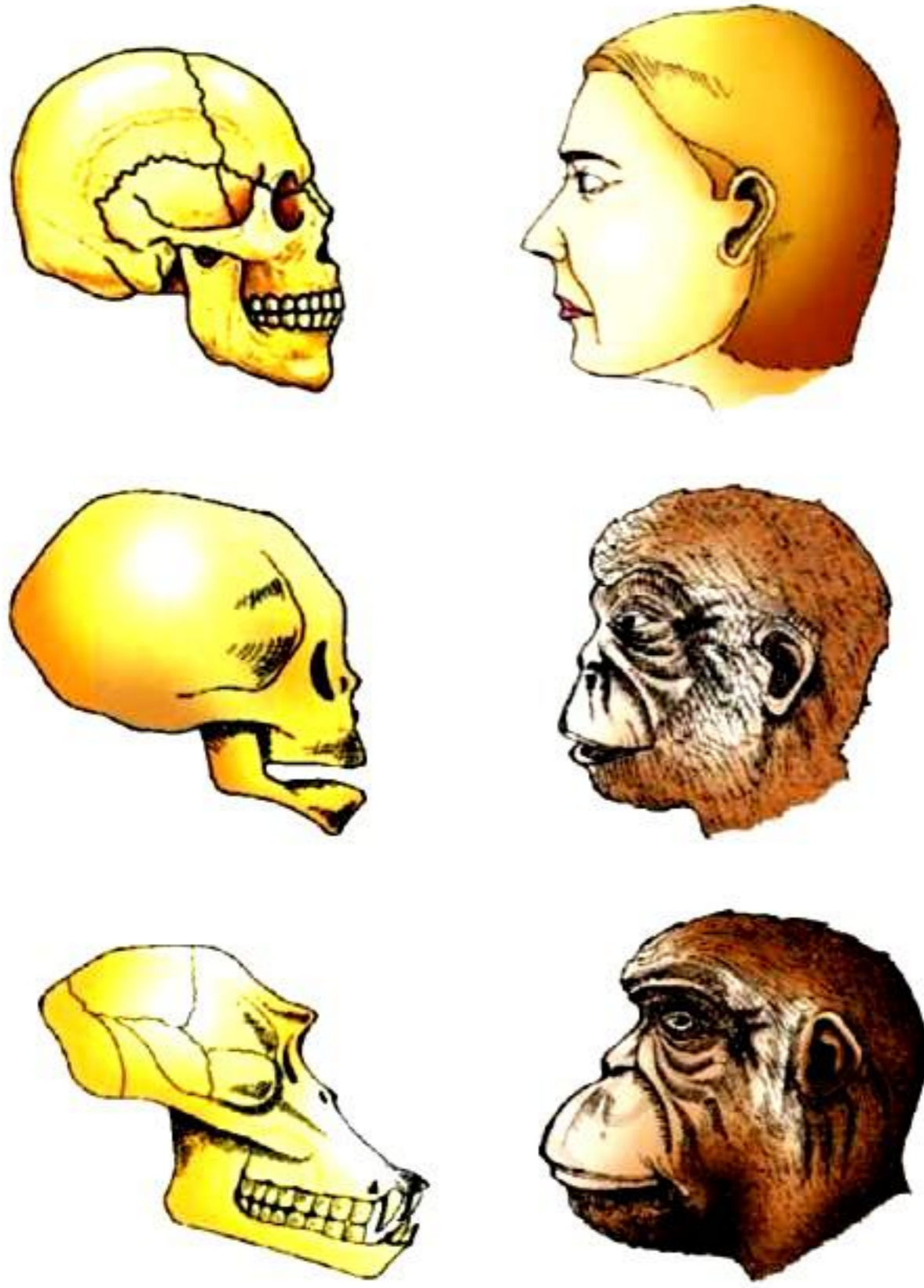


- A. evolution of plant forms through geological periods
- B. evolution of Bryophytes
- C. evolutionary history of vertebrates through geological periods
- D. evolution of Pteridophytes

Ans. (C)

Set – 11

Q1. What does the given figure represent?



- A. comparison of skulls of adult modern human being, baby chimpanzee and adult chimpanzee
- B. comparison of face of adult ancient humans, and monkeys
- C. comparison of adult human and tiger
- D. comparison of humans with lion and tiger

